

Design-Build and Innovative Program Delivery

March 18, 2011

**Darryl D. VanMeter, P.E.
State Innovative Program Delivery Engineer**



Agenda

- Innovative Program Delivery
- Design-Build
 - ❑ Design-Build Code and Rules
 - ❑ Design-Build Manual
 - ❑ Strategic Plan
 - ❑ Awarded and Approved Design-Build Projects
 - ❑ Anticipated Design-Build Projects
 - ❑ “How To Do Business...”
- Public Private Partnerships (P3)

Innovative Program Delivery

Gerald Ross, P.E.
Deputy Commissioner/Chief Engineer

Darryl VanMeter, P.E.
State Innovative Program Delivery Engineer

Mike Dover, P.E.
Asst. State Innovative Program Delivery Engineer

Marlo Clowers, P.E.
Project Manager

John Hancock, P.E.
Project Manager

Kelvin Mullins
Project Manager

Loren Bartlett
Project Manager

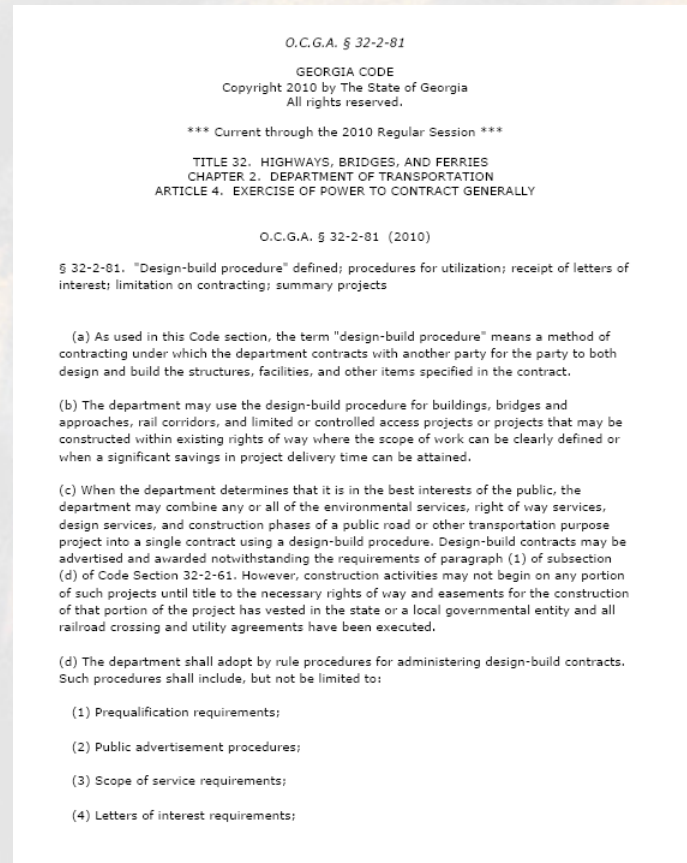
Innovative Program Delivery

- **General Responsibilities**

- ❑ Evaluates and recommends the most efficient delivery method for projects
- ❑ Manages Design-Build projects
- ❑ Manages Design-Bid-Build projects such as Park and Ride
- ❑ Works closely with P3 Division to provide typical Engineering and Project Management duties
- ❑ Develops and house institutional knowledge of best practices for innovative contracting techniques
- ❑ Fosters institutional acceptance of GDOT's innovative contracting

Design-Build Code

- O.C.G.A. § 32-2-81 (2010)
- Award to “lowest, qualified bidder”
- Contract for no more than **30 percent** of the total amount of construction projects awarded in the previous fiscal year
- After **July 1, 2014**, sunsets to no more than **15 percent**
- “Department shall adopt by rule procedures for administering design-build contracts”



Design-Build Rules

- Established per O.C.G.A. § 32-2-81
- Provides generally description for Design-Build procurement

RULES
OF
STATE DEPARTMENT OF TRANSPORTATION
CHAPTER 672-18
GOVERNING THE DESIGN-BUILD PROCEDURES

TABLE OF CONTENTS

672-18-01 Purpose of Regulations.
672-18-02 Definitions.
672-18-03 Prequalification Requirements.
672-18-04 Public Advertisement Procedures.
672-18-05 Scope of Service Requirements.
672-18-06 Letters of Interest Requirements.
672-18-07 Request for Proposals.
672-18-08 Criteria for Evaluating Technical Information and Project Costs.
672-18-09 Criteria for Selection.
672-18-10 Criteria for Award Process.
672-18-11 Criteria for Providing a Stipend.
672-18-12 Criteria for Resolution of Contract Issues.
672-18-13 Fiscal Year Summary Report of Design-Build.

672-18-01 Purpose of Regulations.

The Department's policy concerning design-build is to assure that projects utilizing this method of award are in the best interests of the public, are clearly defined projects, or provide a significant time savings in project delivery.

Design-Build Manual

- Chief Engineer commissioned IPD to develop a Manual for “future generations”
- Describes in more detail the selection, procurement process and administration of Design-Build Projects
- Published September 1, 2010
- Developed with input from FHWA GA Division, GDOT offices and industry representatives

Georgia Department of Transportation
Office of Innovative Program Delivery
DESIGN-BUILD MANUAL

Original Date: September 1, 2010

 GDOT
Georgia Department of Transportation

Design-Build Strategic Plan

- Measurable performance metrics for Design-Build
- Design-Build Manual enhancements
- Strive for opportunities to allow innovation
 - Alternative Technical Concepts (ATC)
 - Performance specifications
 - A+B
- FHWA's Every Day Counts Initiative
- Continue outreach with FHWA GA Division, GDOT offices and industry
- Document performance by July 1, 2014

Awarded Design-Build Projects

Project	P.I. Number	County	Letting Date	Contract Award Amount
I-85 at CR 98/Gabbettville Road Interchange	0008232	Troup	April 20, 2007	\$80,857,486.98
I-75 Auxiliary Lane from I-675 to Eagles Landing Parkway	0008274	Henry	September 21, 2007	\$11,541,886.06
SR 400 @ Hammond Drive Half Diamond Interchange	0008415	Fulton	December 12, 2008	\$17,128,865.41
SR 204 Spur Bridge Replacement over Skidaway Narrows	0008651	Chatham	October 16, 2009	\$22,489,997.00
I-575 @ Rope Mill Connector/Ridgewalk Pkwy Interchange	0006043	Cherokee	March 19, 2010	\$17,103,631.18
I-20 EB from I-285 to CR 5150/Panola Road – CD System	0009542	DeKalb	January 21, 2011	\$30,954,796.73

*Since 2007

Approved Design-Build Projects

Project	P.I. Number	County	Approx Length (miles)	Tentative Letting
SR 400 @ Abernathy Rd - NB Ramp Extension	0010311	Fulton	0.4	Spring 2012
SR 400 from McFarland Rd to Big Crk Greenway - NB Lane Extension	0010290	Fulton	1.4	Spring 2012
I-20 @ SR 28/Washington Rd - Lighting	0010210	Richmond	0.4	June 17, 2011
SR 400/I-85 Connector Ramps	762380	Fulton	1.3	May 20, 2011
Jimmy Deloach Parkway Ext from S. of I-95 to SR 307/Bourne Avenue	0008690	Chatham	3.1	TBD
I-75 from SR 138 to Eagles Landing Pkwy – HOT Managed Lanes Phase I	0009157	Henry	4	TBD
I-75 from Eagles Landing Pkwy to SR 155 – HOT Managed Lanes Phase I	0009156	Henry	7.8	TBD
I-75 from Eagles Landing Pkwy to I-675 – NB Auxiliary Lane incl Walt Stephens Bridge Replacement	0010126	Henry	3	November 18, 2011
I-85 Managed / HOT Lane extension from north of Old Peachtree Road to north of CR 134/Hamilton Mill Road	110600	Gwinnett	7	TBD
I-85 Managed / HOT Lane extension from north of CR 134/Hamilton Mill Road to north of SR 211	110610	Barrow/ Gwinnett	6.3	TBD

Possible Design-Build Projects

- SR 400 @ Northridge Rd
- I-85 corridor to South Carolina State Line
- Group of Bridge Replacement projects
- Group of intersection safety improvement projects
- I-285/75 South
- Other projects continue to be evaluated

How To Do Business

- As a Consultant, get prequalified in GDOT area classes
- Public Notice Advertisement (PNA)
- Identify teaming partners /Contractor(s)
- Request for Qualifications (RFQ)
- Letters of Interest (LOI)/Statement of Qualifications (SOQ)
- Evaluation and Selection of Finalists/Shortlist
- Request for Proposal (RFP)
- Project Letting
 - ❑ In addition to the bid a **technical proposal** is required
 - ❑ Per O.C.G.A. § 32-2-81, project selection is based on lowest qualified bidder
- Award and NTP

Design-Build Closing Remarks

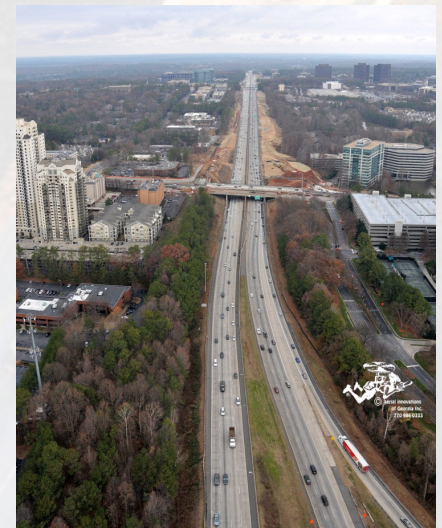
- Continue to gain experience with DB delivery
- Strategic plan
- Outreach to other States, FHWA
- GA Tech research “Next Generation of Design-Build Procurement and Contracting”
- Gaining knowledge from P3 procurement



**I-85 @ Gabettville Rd/KIA
Interchange**



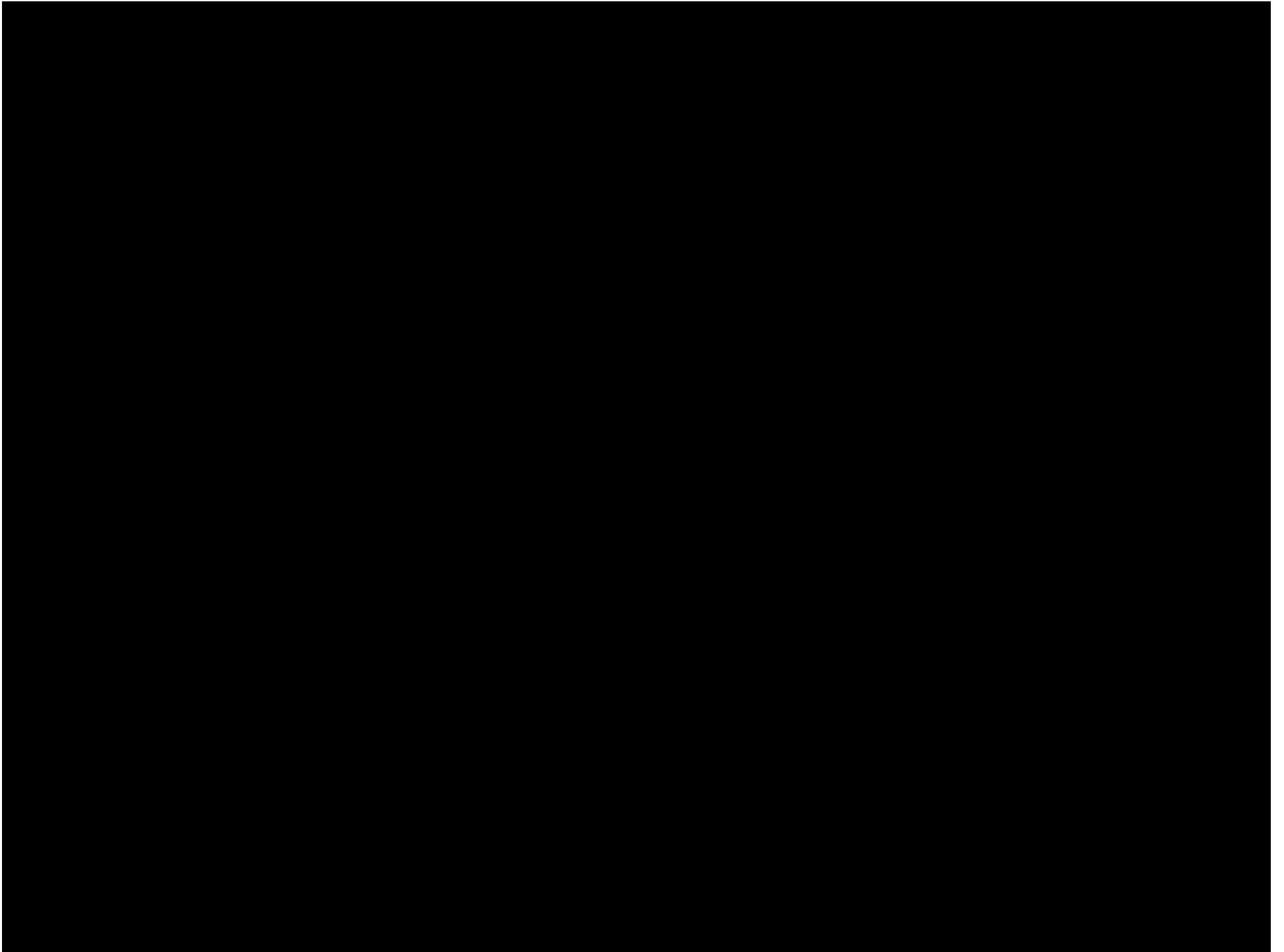
**Skidaway Narrows
Bridge Replacement**



SR 400 @ Hammond Drive

Public Private Partnerships (P3)

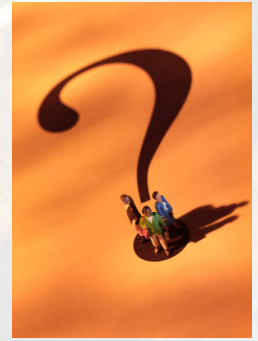
- IPD work closely with the Department's P3 Division to provide typical Engineering and Project Management duties
- Northwest Corridor (NWC)
 - ❑ In active procurement
 - ❑ Represents the first major step in implementing the [Managed Lane System Plan](#) (MLSP)
 - ❑ Next slide represents visual animation of the NWC



Resources

- DB Manual and other related data:
 - ❑ www.dot.state.ga.us/doingbusiness/PoliciesManuals/roads/Pages/DesignBuild.aspx
- Consultant prequalification requirements are located at:
 - ❑ <http://www.dot.state.ga.us/doingbusiness/prequalification/Pages/default.aspx>
- Georgia Procurement Registry:
 - ❑ http://ssl.doas.state.ga.us/PRSapp/PR_index.jsp
- Transportation Explorer located at:
 - ❑ <http://trex-cluster/trex/viewer.htm>

Questions



Contacts

Darryl D. VanMeter, P.E.
State Innovative Program Delivery Engineer
Georgia Department of Transportation
dvanmeter@dot.ga.gov
404-631-1703

Mike D. Dover, P.E.
Assistant State Innovative Program Delivery Engineer
Georgia Department of Transportation
mdover@dot.ga.gov
404-631-1733